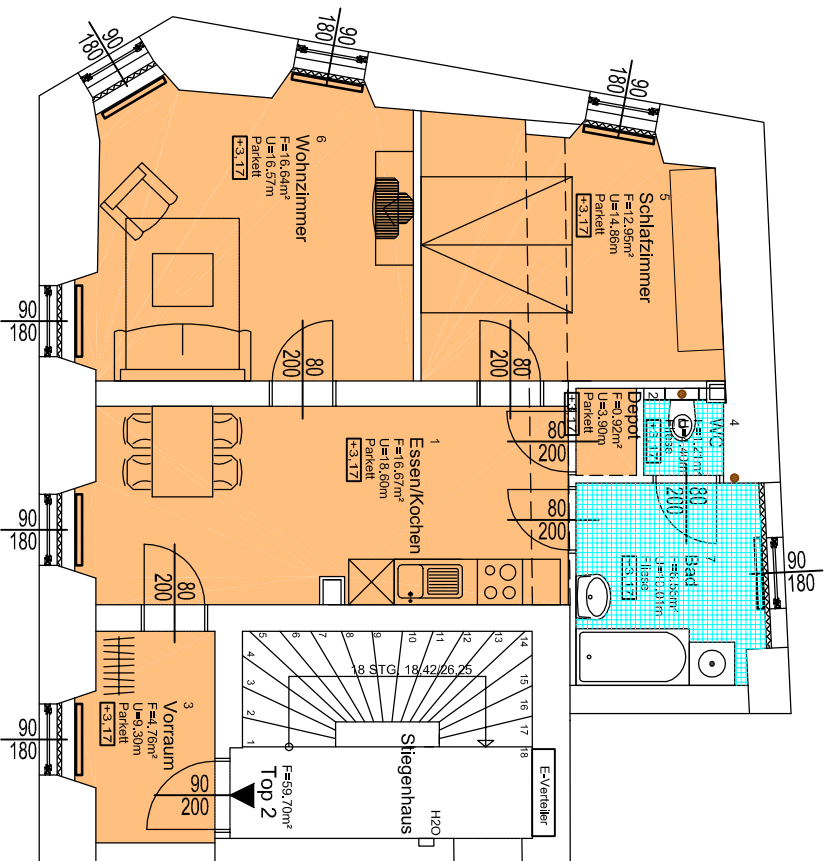


PROJEKT JOSEFIGASSE 22, 8020 GRAZ

1. Obergeschoss



Top 2, 59.70m²

| | | | |
|--------|--------------|---------|---------------------|
| 1 | Essen/Kochen | Parkett | 16.67m ² |
| 2 | Depot | Parkett | 0.92m ² |
| 3 | Vorraum | Parkett | 4.76m ² |
| 4 | WC | Fliese | 1.21m ² |
| 5 | Schlafzimmer | Parkett | 12.95m ² |
| 6 | Wohnzimmer | Parkett | 16.64m ² |
| 7 | Bad | Fliese | 6.56m ² |
| SUMME: | | | 59.70m ² |

Lageplan

