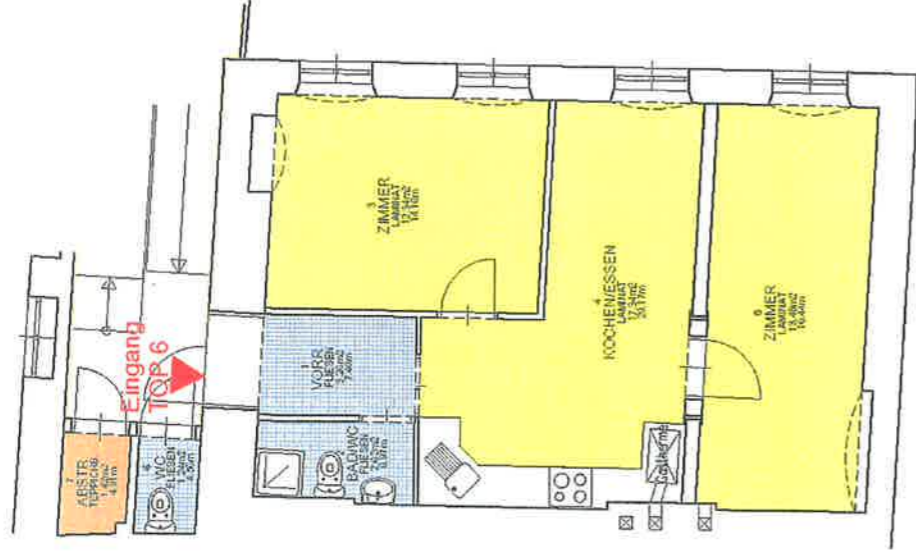


Projekt Trauttmansdorffgasse 3a

1.Obergeschoss, TOP 6 51.70m²



| | | | |
|--------|--------------|--------------|---------------------|
| 1 | VORR. | FLESEN | 3.26m ² |
| 2 | BAD/BC | FLESEN | 2.82m ² |
| 3 | ZIMMER | LAMINAT | 12.34m ² |
| 4 | KOCHEN/ESSEN | LAMINAT | 17.34m ² |
| 5 | ZIMMER | LAMINAT | 13.40m ² |
| 6 | GANZ-NC | FLESEN | 1.29m ² |
| 7 | ABSTR. | TEPPICHBODEN | 1.42m ² |
| SUMME: | | | 51.70m ² |

